

A group of people are gathered outdoors for a meal at sunset. In the foreground, a table is set with various dishes, including bread, a salad, and drinks. A man and a woman are laughing heartily in the middle ground. The background shows a scenic view of hills under a warm, golden sky. The word "NOVO" is overlaid in a large, bold, sans-serif font within a metallic-looking rectangular frame.

NOVO

THE NEW AMERICAN BACKYARD

A group of people are dining outdoors at sunset. The scene is warm and social, with people holding wine glasses and eating. A semi-transparent grey box is overlaid on the image, containing text. The background shows a blurred landscape with trees and a bright sky.

THE NEW AMERICAN BACKYARD

Family, togetherness, passion and comfort are all a part of the art and joy of casual living outdoors. NOVO crafts exceptional outdoor cooking and entertaining equipment to elevate your lifestyle. The New American Backyard is the theater to celebrate life's big moments and savor every day's small victories.

Built on decades of outdoor living industry experience & performance driven innovation we invite you to craft your own New American Backyard with NOVO.

NOVO
THE NEW AMERICAN BACKYARD

COOKING

NOVO Series Grills: **5**

HONE Series Grills: **6**

ALTA Series Grills: **7**

NOVO Side Burners: **8**

NOVO Griddle: **8**

ALTA Side Burners: **9**

Warming Drawer: **9**

ENTERTAINING

Refrigeration: **11-12**

Sink & Bar: **13**

Pantry & Storage: **14**

Ventilation: **15**

Accessories: **16**

INFO

Warranty: **18**

Specifications: **19**

A high-angle, close-up photograph of a group of people dining at a restaurant. The table is made of light-colored wood and is set with several white plates, bowls, and wine glasses. The dishes include fried chicken, french fries, roasted potatoes, and various meats. People's hands are visible, using forks and knives to eat. The lighting is warm and natural, suggesting an outdoor or well-lit indoor setting. The word "COOKING" is overlaid in the center in a bold, black, sans-serif font.

COOKING

NOVO
THE NEW AMERICAN BACKYARD

NOVO SERIES GAS GRILLS



NOVO42
42" Gas Grill with Infrared Backburner



NOVO36
36" Gas Grill with Infrared Backburner



NOVO30
30" Gas Grill with Infrared Backburner on optional grill base

NOVO series grills are the culmination of decades of experience and innovation designing and building the very best outdoor cooking systems. Crafted from the highest quality stainless steel and featuring our most powerful burners and professional grade features, our luxurious NOVO grills are designed to be the centerpiece of your backyard.

STANDARD FEATURES

304 stainless steel construction to withstand harsh outdoor elements

- A** 26,000 BTU, 304 stainless steel burners for exceptional cooking performance
- B** Advanced ceramic briquette array to ensure even heat & maximum flavor
- C** Professional style square cooking grates for restaurant style sear marks & heat transfer
- D** Heat zone separators for multi-zone cooking
 - Double lined hood w/feather light spring assist to open and close with ease
 - Dual-position warming rack nests up and out of the way when not in use
 - Rugged flame thrower ignition system for safe and reliable start-up
 - Illuminated control panel (white) and interior so the fun doesn't stop when the sun goes down
 - 15,000 BTU infrared backburner with integrated spit rod storage
 - Premium, USA made, temperature gauge
 - Built-in vinyl grill cover included
 - Designed, built and tested by our master craftsmen in Southern California
 - Available in Natural Gas and Propane

OPTIONS

- Drop-In Sear Burner
- Rotisserie Kit (40 lb. motor)
- Heavy-Duty Rotisserie Kit* (100 lb. motor)
- Grill Bases
- Smoker Tray
- Griddle Plate
- Red Brass Burners

*not available for 30" grills

NOVO SERIES COOKING SYSTEM





HONE SERIES GAS GRILLS

HONE series is our high-performance premium grill line. Crafted from the highest quality stainless steel & featuring our most powerful burners, HONE series grills are designed to elevate your backyard entertaining experience.



HONE42
42" Gas Grill

STANDARD FEATURES

- 304 stainless steel construction to withstand harsh outdoor elements
- 26,000 BTU, 304 stainless steel burners for exceptional cooking performance
- 16 gauge, 304 stainless steel burner covers to spread heat evenly & vaporize drippings
- Heavy-duty 9mm stainless steel cooking grates for deep sear marks and efficient heat transfer
- Heat zone separators for multi-zone cooking
- Double lined hood for better heat retention
- Dual-position warming rack nests up and out of the way when not in use
- Rugged flame thrower ignition system for safe and reliable start-up
- Illuminated control panel (white) and interior so the fun doesn't stop when the sun goes down
- Designed, built and tested by our master craftsmen in Southern California
- Available in Natural Gas and Propane

OPTIONS

- Drop-In Sear Burner
- Heavy-Duty Vinyl Cover
- Rotisserie Kit (40 lb. capacity)
- Heavy-Duty Rotisserie Kit* (100 lb. capacity)
- Grill Bases
- Smoker Tray
- Griddle Plate
- Feather Light Spring Assist Kit
- Advanced Ceramic Briquettes
- Pro-Style Square Cooking Grates
- Red Brass Burners

**not available for 30" grills*



HONE36
36" Gas Grill



HONE30
30" Gas Grill with optional grill base



HONE series stainless steel burner covers

ALTA SERIES GAS GRILLS



ALTA40
40" Gas Grill with Infrared Backburner



ALTA32
32" Gas Grill with Infrared Backburner

ALTA series grills incorporate the best of what we've learned from building high quality outdoor cooking systems into a well designed and affordable grilling machine.

STANDARD FEATURES

- 443 grade stainless steel construction for years of worry free use
- 12,000 BTU stainless steel burners for exceptional cooking performance
- 8mm stainless steel cooking grates for deep sear marks and efficient heat transfer
- 304 stainless steel burner covers to spread heat evenly & vaporize drippings
- Heat zone separators for multi-zone cooking
- Double lined hood for better heat retention
- Rugged flame thrower ignition system for safe and reliable start-up
- Illuminated control panel (blue) and interior so the fun doesn't stop when the sun goes down
- 12,000 BTU infrared backburner
- Available in Natural Gas and Propane

OPTIONS

- Drop-In Sear Burner
- Heavy-Duty Vinyl Cover
- Grill Bases
- Rotisserie Kit (25 lb. capacity)
- Smoker Tray
- Griddle Plate
- Ceramic Briquettes



ALTA32
32" Gas Grill with Infrared Backburner on optional grill base



NOVO POWER BURNER



NOVOPB
Power Burner



STANDARD FEATURES

Designed to complement **NOVO** & **HONE** series grills. A large surface area and high BTU's enable wok & stir-fry cooking, seafood boils, al-dente pasta, perfect paella, deep fried creations and more.

- 304 stainless steel construction to withstand harsh outdoor elements
- High Power 65,000 BTU stainless steel double burner system
- Large capacity 20" x 20" stainless steel grate cooking surface
- Removable center insert to allow for round bottom woks
- Illuminated control panel (white) so the fun doesn't stop when the sun goes down
- Protective stainless steel lid included
- Designed, built and tested by our master craftsmen in Southern California
- Available in Natural Gas and Propane

NOVO DOUBLE SIDE BURNER



NOVODBSB
Double Side Burner



STANDARD FEATURES

Designed to complement **NOVO** & **HONE** series grills, our side burners give you the power and flexibility to confidently prepare side dishes and sauces with ease.

- 304 stainless steel construction to withstand harsh outdoor elements
- Dual independently controlled 17,500 BTU burners
- Large capacity 21-1/4" x 11-1/2" stainless steel grate cooking surface
- Illuminated control panel (white) so the fun doesn't stop when the sun goes down
- Protective stainless steel lid included
- Available in Natural Gas and Propane

NOVO GRIDDLE



NOVO30GRID
30" Griddle



STANDARD FEATURES

Designed to complement **NOVO**, **HONE** & **ALTA** series grills, our 30" gas griddle expands your culinary capabilities to sauté, stir-fry and sear with power and control.

- 304 stainless steel construction
- Dual 18,000 BTU stainless steel burners (36,000 BTU total)
- Durable 1/2" thick, 304 stainless steel cooking plate
- Generous 495 sq. in. cooking surface
- Heat zone divider for multi-temperature cooking
- Illuminated control panel (white)
- Protective stainless steel lid included
- Built-in installation or mount on optional cart base
- Kit available to convert control panel lighting from white (NOVO/HONE) to blue (ALTA)
- Available in Natural Gas and Propane

ALTA POWER BURNER



ALTAPB
Power Burner

STANDARD FEATURES

Designed to complement **ALTA** series grills. Our ALTA Power Burner offers high BTU's for wok & stir-fry cooking, seafood boils, al-dente pasta, perfect paella, deep fried creations and more.

- 443 stainless steel construction to withstand harsh outdoor elements
- Powerful 60,000 BTU stainless steel double ring burner system
- Generous 16-1/2" x 13" stainless steel cooking surface
- Removable center insert to allow for round bottom woks
- Illuminated control panel (blue) so the fun doesn't stop when the sun goes down
- Protective stainless steel lid included
- Available in Natural Gas and Propane

ALTA DOUBLE SIDE BURNER



ALTADBSB
Double Side Burner

STANDARD FEATURES

Designed to complement **ALTA** series grills. Our ALTA double side burner gives you the power and flexibility to confidently prepare sides and sauces with ease.

- 443 stainless steel construction to withstand harsh outdoor elements
- Dual independently controlled 12,000 BTU burners
- Generous 19-1/2" x 10-1/2" stainless steel grate cooking surface
- Illuminated control panel (blue) so the fun doesn't stop when the sun goes down
- Protective stainless steel lid included
- Available in Natural Gas and Propane

WARMING DRAWER



NOVO36WD
36" Warming Drawer

STANDARD FEATURES

Designed to complement **NOVO**, **HONE** & **ALTA** series grills our 36" warming drawer allows you to prep and entertain with ease and style. Bring maximum efficiency and functionality to your outdoor kitchen.

- 304 stainless steel construction to withstand harsh outdoor elements
- Smooth glide heavy duty tracks
- Full extension drawer slides
- Variable temperature control up to 220° F

A group of people are dining outdoors at sunset. In the foreground, a woman with long dark hair is laughing joyfully, wearing a red and green patterned strapless top. She is holding a silver fork. Behind her, a man in a dark blue shirt is looking towards her. To the right, another man in a pink and white striped shirt is also visible. The table is set with white plates, bread, and a vase of pink flowers. The background shows a bright sunset over a landscape.

ENTERTAINING

NOVO
THE NEW AMERICAN BACKYARD

OUTDOOR REFRIGERATION

Bring the convenience of cold storage and timeless design to your outdoor kitchen. Designed to complement **NOVO, HONE & ALTA** series grills. Featuring rugged construction for reliability and classic style.



NOVO24DLXREF

24" DELUXE OUTDOOR REFRIGERATOR

- 5.3 Cubic Feet Capacity
- Holds 165 standard sized cans
- 304 Stainless Steel Exterior
- Interior LED Light
- Locking Right Hinge Door (*non-reversible*)
- Temperature set range: 32° - 50° F
- Certifications: ETL, DOE, CE
- UL Rated for Outdoor Use
- Optional Trim Kit (NOVO24TRIM)



NOVO242DREF-B

24" OUTDOOR 2-DRAWER REFRIGERATOR

- 5.01 Cubic Feet Capacity
- Holds 114 standard sized cans
- 304 Stainless Steel Soft-Closing Drawers & Handles
- Black Interior & Exterior Cabinet
- Interior LED Light
- Digital Temperature Controls
- Temperature set range: 32°F - 72°F
- Certifications: ETL, DOE, CE
- UL Rated for Outdoor Use
- Optional Trim Kit (NOVO242BTRIM)



NOVO15GLASSREF

15" OUTDOOR REFRIGERATOR WITH GLASS DOOR

- 3.2 Cubic Feet Capacity
- 304 Stainless Steel Door & Handle
- Black Interior & Exterior Cabinet
- Triple-Glazed, Tinted Glass
- Locking Right Hinge Door (*non-reversible*)
- Interior LED Lighting
- Temperature set range: 32° - 50° F
- Certifications: ETL, DOE, CE
- UL Rated for Outdoor Use
- Optional trim kit (NOVO15TRIM)



NOVOIM

15" DELUXE OUTDOOR ICE MACHINE

- Maximum ice storage: 25 lbs.
- Ice-making capacity: 50 lbs./day
- Gravity drain
- Self-Closing 304 Stainless Steel Door, Body & Handle
- Certifications: ETL, DOE, CE
- UL Rated for Outdoor Use
- Left Hinge (*reversible*)
- Optional trim kit (NOVOIMTRIM)



Optional Trim Kit

OUTDOOR KEGERATORS & WINE STORAGE

Elevate your entertaining options in style and elegance with our stainless steel outdoor-rated kegerators and wine coolers. Featuring rugged construction for reliability and classic style. Designed to complement **NOVO**, **HONE** & **ALTA** series grills.



NOVODBLKEG

24" DELUXE OUTDOOR KEGERATOR - DOUBLE TOWER

- 6.6 Cubic Feet Capacity
- 304 Stainless Steel Exterior
- Locking Right Hinge Door (*non-reversible*)
- Keg configurations:
 - One (1) regular sized keg
 - Two (2) pony kegs
 - One (1) quarter keg and one (1) pony keg
- Temperature set range: 32° - 50° F
- Interior LED Light
- Includes: Tap Tray, 2 Hoses, CO2 Tank & Regulator
- Certifications: ETL, DOE, CE
- UL Rated for Outdoor Use
- Optional trim kit (NOVO24TRIM)



NOVOSNGKEG

24" DELUXE OUTDOOR KEGERATOR - SINGLE TOWER

- 6.6 Cubic Feet Capacity
- 304 Stainless Steel Exterior
- Locking Right Hinge Door (*non-reversible*)
- Keg configurations:
 - One (1) regular sized keg
 - Two (2) pony kegs
 - One (1) quarter keg and one (1) pony keg
- Temperature set range: 32° - 50° F
- Interior LED Light
- Includes: Tap Tray, 1 Hose, CO2 Kit Tank & Regulator
- Certifications: ETL, DOE, CE
- UL Rated for Outdoor Use
- Optional trim kit (NOVO24TRIM)



NOVO15WINE1

15" OUTDOOR WINE COOLER WITH GLASS DOOR

- 3.2 Cubic Feet Capacity
- 304 Stainless Steel Door & Handle
- Black Interior & Exterior Cabinet
- Double-Glazed, Self-Closing, Tinted Glass
- Locking Right Hinge Door (*non-reversible*)
- Interior LED Lighting
- Stores 28 standard size wine bottles
- Single zone temperature set range: 41° - 64° F
- Certifications: ETL, DOE, CE
- UL Rated for Outdoor Use
- Optional trim kit (NOVO15TRIM)

OUTDOOR SINK & BAR ACCESSORIES

Outfit your outdoor space with the all amenities needed to entertain in style. Our full range of accessories allow you to bring the party outdoors with stainless steel sinks and built-in cooler options. Designed to complement **NOVO**, **HONE** & **ALTA** series grills.



NOVO30BEV

- 30" Lighted Beverage & Prep Station
- White LED Front Panel Lighting
- 304 Stainless Steel Construction
- Sink & Faucet Combo
- 40 lb. Ice Compartment
- Built-in Bottle Opener



NOVO19SINK

- 19" x 15" Undermount Sink with Hot/Cold Faucet



NOVO15SINK

- 15" Drop-In Sink with Hot/Cold Faucet



ALTA30BEV

- 30" Lighted Beverage & Prep Station
- Blue LED Front Panel Lighting
- 304 Stainless Steel Construction
- Sink & Faucet Combo
- 40 lb. Ice Compartment
- Built-in Bottle Opener



NOVO28COOLER

- 28" 2.7 cu. ft. Drop-In Cooler

NOVO17COOLER

- 17" 1.7 cu. ft. Drop-in Cooler

PANTRY & STORAGE

A place for everything and everything in its place. NOVO offers a wide range of premium 304 stainless steel constructed heavy-duty storage options to keep your outdoor space well stocked and organized. Designed to complement **NOVO, HONE & ALTA** series grills. Drawers feature our premium soft-closing slide rails.

DRY PANTRY STORAGE



NOVO362DSC

36" 2-Drawer Dry Storage Pantry & Enclosed Cabinet Combo

DOOR/DRAWER COMBOS



NOVO362DADC

36" 2-Drawer & Access Door Combo

Available in:
30", 35", 36", 42"

SINGLE ACCESS DOORS



NOVO18SVAD

18" Access Door

Available in:
18", 20", 27"

DOUBLE ACCESS DOORS



NOVO36DBLAD

36" Double Access Doors

Available in:
30", 33", 36", 42"

VERTICAL DRAWERS



NOVO17TSD

17" Triple Drawer



NOVO17DBLSD

17" Double Drawer

PAPER TOWEL COMBO



NOVO172DPTHC

17" Vertical 2-Drawer & Paper Towel Holder Combo

UTENSIL DRAWER



NOVO26UD

26" Utensil Drawer

TRASH & RECYCLING



NOVO20DBLTD

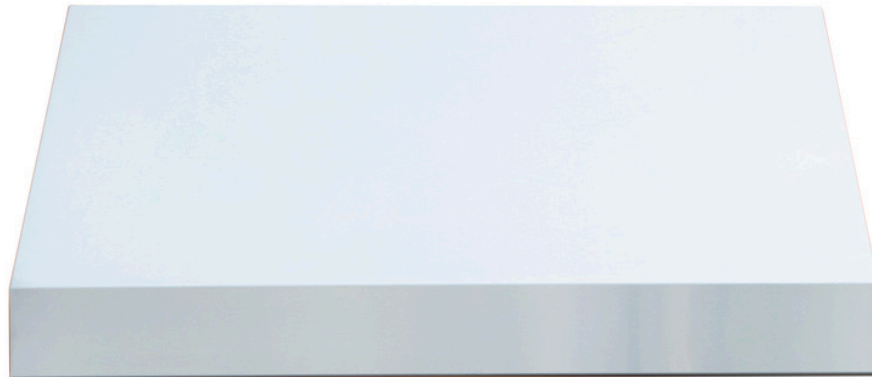
20" Double Bin Trash & Recycling

Available in:
20" Single or Double Trash Bins

VENTILATION

Protect your grill, surroundings and guests from excessive heat, grease and smoke with one of our premium vent hoods. Designed and built in Southern California to complement **NOVO**, **HONE** & **ALTA** series grills.

VENT HOODS



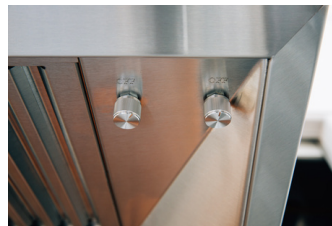
NOVO60VH
NOVO48VH
NOVO36VH

Outdoor Vent Hoods

- 304 stainless steel double wall construction
- 1,200 CFM
- Interior halogen task lighting
- Top or Rear exhaust
- 1/2" mounting bracket included
- Requires:
 - 10" ducting (not included)
 - 115v 15amp hardwired electrical connection

Available in:

- 60" (60" Wide x 18" High x 30" Deep)
- 48" (48" Wide x 18" High x 30" Deep)
- 36" (36" Wide x 18" High x 30" Deep)



4" SPACER BRACKETS



NOVO60VHSB4 4" Spacer Brackets
NOVO48VHSB4
NOVO36VHSB4

Available for 60", 48", 36" vent hoods

8" SPACER BRACKETS



NOVO60VHSB8 8" Spacer Brackets
NOVO48VHSB8
NOVO36VHSB8

Available for 60", 48", 36" vent hoods

12" DUCT COVERS

Available for 60", 48", 36" vent hoods



ACCESSORIES



ROTISSERIE KITS

NOVORK: Rotisserie kits for 30", 36", 42" NOVO/HONE grills, 40 lb. capacity

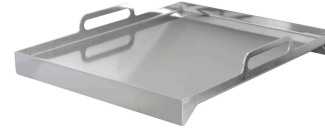
NOVOHDRK: Heavy-Duty Rotisserie kits for 36" & 42" NOVO/HONE grills, 100 lb. capacity

ALTARK: Rotisserie kits for 32" & 40" ALTA grills, 25 lb. capacity



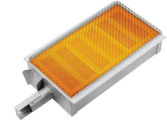
SMOKER TRAYS

NOVOST: for NOVO/HONE grills
ALTAST: for ALTA grills



GRIDDLE PLATE

NOVO18GP: 14" x 18" Stainless Steel Griddle Plate. Fits all grill models.



DROP-IN SEAR BURNERS

NOVOIRB: for NOVO/HONE grills
ALTAIRB: for ALTA grills



INSULATING LINERS FOR COMBUSTIBLE INSTALLATIONS

Available for all grill, side burner & griddle models. Required for use in combustible construction.



BUILT-IN GRILL COVERS

Included with NOVO series grills
Available for NOVO/HONE/ALTA grills



FREESTANDING GRILL COVERS

Available for NOVO/HONE/ALTA grills & NOVO Griddle



BUILT-IN GRIDDLE, POWER & SIDE BURNER COVERS

Available for all griddle, power burner and side burners

GRILL BASES/CARTS



NOVOGB

Features drop down side shelves & concealed casters



ALTAGB

Features fixed side shelves



NOVO30GRIDGB

Features drop down side shelves





NOVO is family owned and located in the Berkshire Mountains of New England. We utilize state-of-the-art manufacturing facilities in Southern California to craft our NOVO and HONE series grills. Drawing on decades of experience in the outdoor living industry we understand that details matter and at NOVO we take great pride in helping families craft their own New American Backyard.

Thank you for inviting NOVO into your home.

NOVO
THE NEW AMERICAN BACKYARD

WARRANTY

NOVO products include our LIMITED LIFETIME WARRANTY with all replacement parts 100% non-prorated.

NOVO Limited Warranty is valid for original purchaser at original site of delivery with proof of purchase and photo documentation only. Warranty is void upon transfer of ownership. Warranty does not apply to products installed in any commercial, rental, or non-residential application. Warranty covers replacement parts only. Manufacturer is not responsible for labor or labor-related costs. Warranty does not cover discoloration, surface rust, corrosion, or oxidation, which may occur due to harsh environments, chemicals, or overheating. Warranty will not apply for damage resulting from improper installations, abuse, extreme environments, grease fires, or misuse. Proof of regular and proper maintenance is required. Coastal, humid, and/or salt environments are subject to manufacturer review. All out-of-box claims must be made within 30 days of purchase and must be made prior to installation. Any product installed damaged will be considered damaged during installation and not covered under warranty. This warranty gives you specific legal rights, and you may also have other rights which vary from state to state.

TO OBTAIN WARRANTY PROTECTION UNDER THE NOVO LIMITED WARRANTY, YOU MUST SUBMIT A COMPLETED REGISTRATION FORM ONLINE AT WWW.NOVOGRILLS.COM WITHIN 30 DAYS OF THE PURCHASE DATE. FAILURE TO SUBMIT THE REGISTRATION FORM WILL VOID THE LIMITED WARRANTY PROTECTION.

Please be advised - all display models are sold "as is" and the warranty covers the following items only: main burners (Limited Lifetime Warranty), grates (Limited Lifetime Warranty), burner covers (Limited Lifetime Warranty). All warranties are subject to the review and approval of NOVO.

GAS APPLIANCES (GRILLS, SIDE/POWER BURNERS)

- Limited Lifetime Warranty on construction and manufacturer defects
- Limited Lifetime Warranty on stainless steel construction
- Limited Lifetime Warranty on cooking grates, burners, burner covers, valves, stainless steel burner covers and heat zone separators, temperature gauges, & hood springs
- Limited Lifetime Warranty on briquette systems
- 3 Year Warranty on all other parts, components, & electrical, including: LED bulbs, wire harness, & switches; power source wire; transformer; interior halogen light wire & bulb; regulators

COLD STORAGE & SINKS

- Limited Lifetime Warranty on coolers
- 3 Year Warranty on drains & faucets

REFRIGERATION (15" & 24" models)

- 3 Year Warranty on all construction including compressors
- 1 Year Warranty on transformer, LED bulbs, LED harness, power source wire, LED switches, interior halogen light wire/bulbs

DRAWERS, DOORS, GRILL LINERS & CARTS

- Limited Lifetime Warranty on construction, workmanship and materials for all stainless steel parts, including doors, drawers, grill liners, & carts
- 3 Year Warranty on electrical (Warming Drawers)

VENT HOODS

- 5 Year Warranty on all stainless steel construction
- 3 Year Warranty on blowers, LED lighting, wiring harnesses and switches



PRODUCT
SPECIFICATIONS



www.novogrills.com

NOVO

THE NEW AMERICAN BACKYARD

www.novogrills.com

